

**FOCUS
ON REAL
DESIGN
AUTOMATE
THE REST**

**CUSTOMTOOLS
BATCH PRINTING YOUR
SOLIDWORKS FILES**



CUSTOMTOOLS



CUSTOMTOOLS

Table of Contents

BATCH PRINTING YOUR SOLIDWORKS DRAWINGS.....	3
Introduction	3
What does it do?	3
How does it work?.....	3
How can you use it?.....	3
Creating a print profile	4
Defining the printing settings of a print profile:.....	5
Printing your SOLDIWORKS Drawings	9
From an opened assembly in SOLIDWORKS	9
If no documents are opened in SOLIDWORKS	9
Managing the printing order.....	10
Filtering the documents to be selected for printing	12
From other functionalities of CUSTOMTOOLS.....	13



CUSTOMTOOLS

Batch printing your SOLIDWORKS drawings

Introduction

What does it do?

Automates the printing of the SOLIDWORKS drawings.

How does it work?

The batch printing is managed via profiles. Printing settings can be defined based on the Sheet formats of the SOLIDWORKS drawings (e.g. *printer, paper size and orientation*). Multiple printing settings can be defined for different sheet formats of the same **Print profile**.

How can you use it?

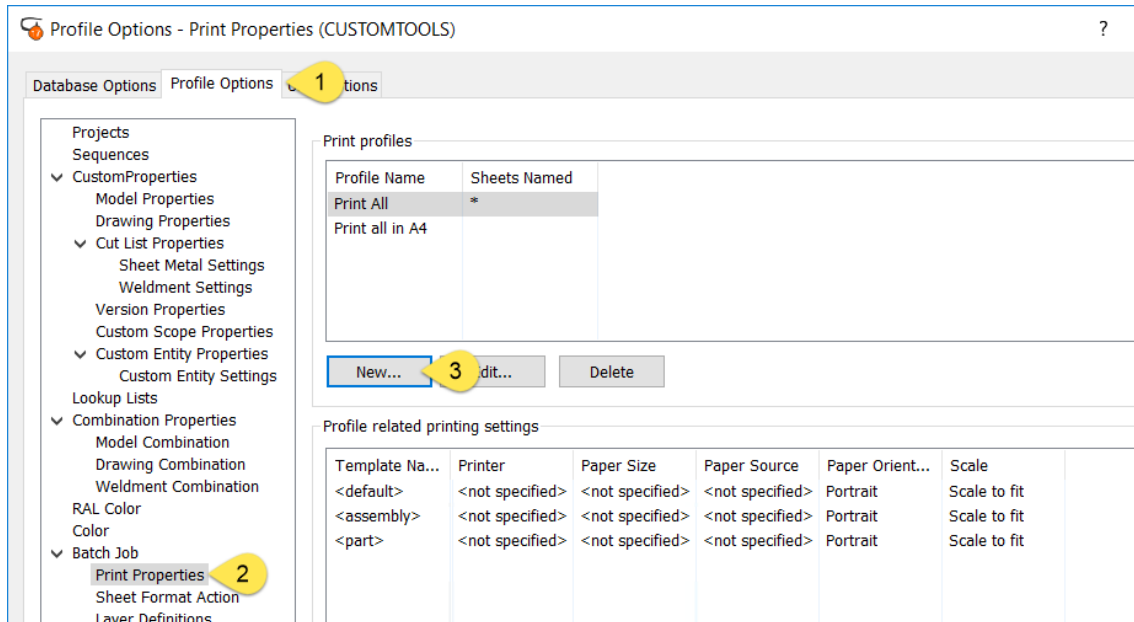
If an assembly is opened, click on the **Print & Convert** icon. The **Print & Convert** dialog opens, with the **Print profiles** tab active. Multiple print profiles can be selected at once. The SOLIDWORKS files do be printed do not have to be opened in SOLIDWORKS. The **Print & Convert** dialog can also be launched from the **Search results** or from the CUSTOMTOOLS **command bar**, when no SOLIDWORKS files have been opened.



CUSTOMTOOLS

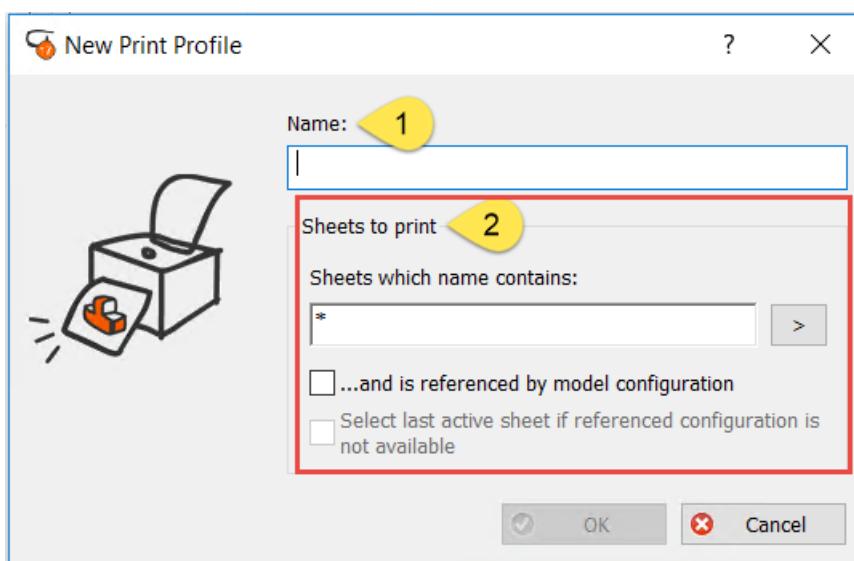
Creating a print profile

Print profiles are used to store the printing settings. Multiple profiles can be defined (e.g. *To print your drawings in a specific size: A4 or to their current size*).



To create a new print profile, open the CUSTOMTOOLS **Options** dialog:

1. Activate the **Profile Options** tab,
2. Select **Print properties** from the tree view,
3. Click on **New** to open the **New Print Profile** dialog.



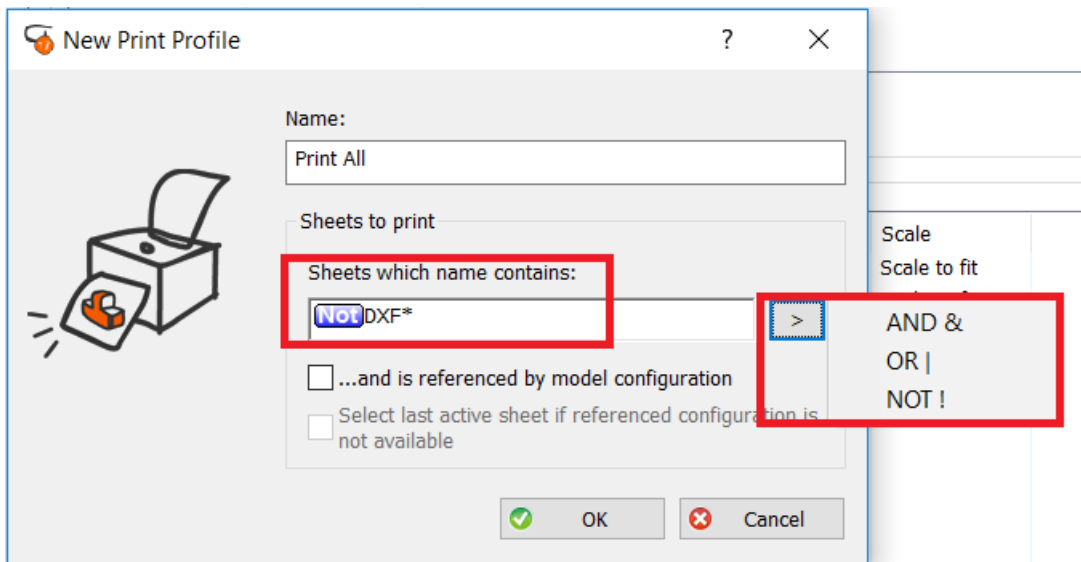
1. **Name:** Defines the name of the print profile as it will appear in the **Print & Convert** dialog.



CUSTOMTOOLS

2. **Sheets to print:** CUSTOMTOOLS is able to manage the selection of the sheet of the drawings to print:

- **Sheets which name contains:** Filter the drawings sheets to be selected based on the name of the sheet when the profile is selected (e.g. *NOT DXF* -> *Exclude sheets called DXF from being selected*).



By clicking on the >

- **AND &:** Selects the sheets to be printed based on multiple criteria that must be contained in the sheet name in order to be selected.
 - **OR |:** Selects the sheets to be printed if one of the defined criteria matches.
 - **NOT !:** Excludes the sheets from being selected if it matches with the criteria. This can be used to exclude certain sheets from being selected (E.g.: *Sheet called DXF*).
- **... and is referenced by model configuration:** Prints configuration specific drawing sheets.
 - **Select the last active sheet if referenced configuration is not available:** Selects the sheet that was last active if the specific referenced configuration cannot be found.



TIP: To make your selection more effective, you can search for word variations using the asterisk (*) as a wildcard symbol.

Defining the printing settings of a print profile:

The printing settings in CUSTOMTOOLS are defined based on the sheet format of the drawing. Different sheet formats printing settings can be defined for the same print profile.



CUSTOMTOOLS

Profile Options - Print Properties (CUSTOMTOOLS)

Database Options Profile Options **1** tions

Projects
Sequences
CustomProperties
Model Properties
Drawing Properties
Cut List Properties
Sheet Metal Settings
Weldment Settings
Version Properties
Custom Scope Properties
Custom Entity Properties
Custom Entity Settings
Lookup Lists
Combination Properties
Model Combination
Drawing Combination
Weldment Combination
RAL Color
Color
Batch Job
Print Properties **2**
Sheet Format Action
Layer Definitions
File Conversion
Database Search Groups
Materials
Export Profiles
Cutting Profile Options
Coord Note Options

Print profiles

Profile Name	Sheets Named
Print All	!DXF*
Print all in A4	!DXF* 3

New... Edit... Delete

Profile related printing settings

Template Na...	Printer	Paper Size	Paper Source	Paper Orient...	Scale
<default>	<not specified>	<not specified>	<not specified>	Portrait	Scale to fit
<assembly>	<not specified>	<not specified>	<not specified>	Portrait	Scale to fit
<part>	<not specified>	<not specified>	<not specified>	Portrait	Scale to fit
A0-L.sliddrt	...!HP Color L...	<not specified>	<not specified>	Landscape	Scale to fit
A1-L.sliddrt	...!HP Color L...	<not specified>	<not specified>	Landscape	Scale to fit
A2-L.sliddrt	...!HP Color L...	<not specified>	<not specified>	Landscape	Scale to fit
A3-L.sliddrt	...!HP Color L...	<not specified>	<not specified>	Landscape	Scale to fit
A4-L.sliddrt	...!HP Color L...	<not specified>	<not specified>	Landscape	Scale to fit
A4-P.sliddrt	...!HP Color L...	<not specified>	<not specified>	Portrait	Scale to fit

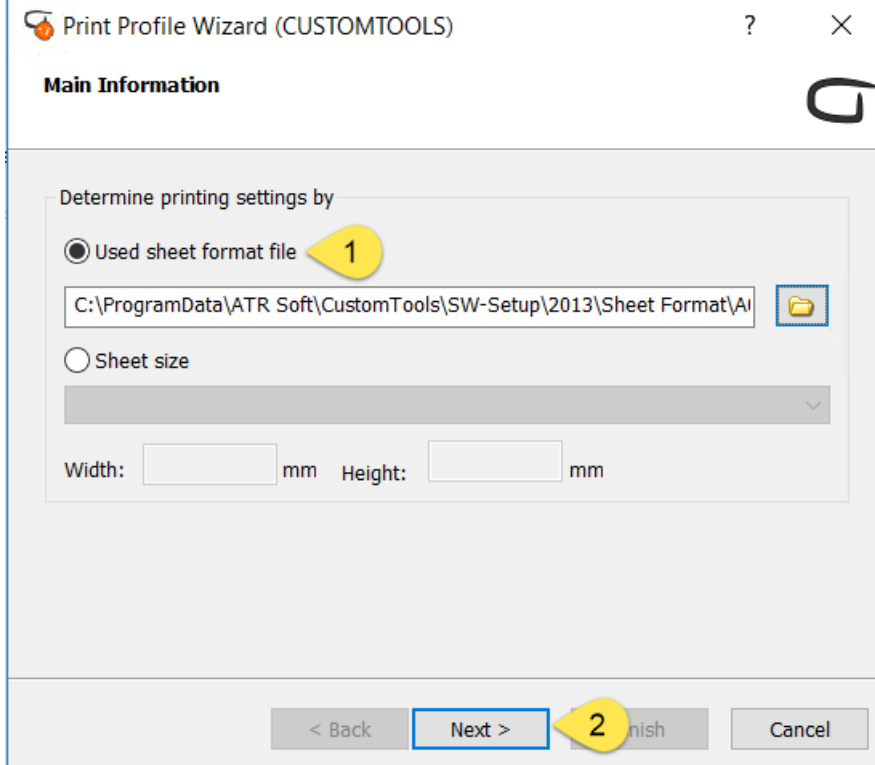
New... **4** Edit... Delete

To define the print settings of a Print profile, open the CUSTOMTOOLS **Options** dialog,

1. Activate the **Profile Options** tab,
2. Select **Print properties** from the tree view,
3. Select the **Print Profile** for which the printing settings are to be defined,
4. From the **Profile related printing settings**, click **New**.



CUSTOMTOOLS



The **Print Profile Wizard** dialog opens:

1. From the **Used sheet format file**, select the SOLIDWORKS sheet formats for which the printing settings will be defined.
2. Then, click **Next**.



NOTE: Select files with the .sldprt file extension.



CUSTOMTOOLS

Print Profile Wizard

Printer Information

Printer: 1
HP Color LaserJet CP3525 PCL 6 on fs001.atrsoft.local (redirected 2)

Paper size and source 2
Size: Letter
Width: mm Height: mm
Source: <Not specified>

Paper orientation 3
 Landscape
 Portrait

Scale 4
 Scale to fit Scale: 100 %

< Back Next > Finish 5 Cancel

Select the different printing information:

1. **Printer:** Select the printer to be used to print the SOLIDWORKS Drawings.
2. **Paper size and Source:** Select the output paper size and printer tray used by the printer. The list of paper size and the trays available updates based on the selected Printer.
3. **Paper orientation:** Select the orientation of the printed SOLIDWORKS Drawings:
 - o Landscape
 - o Portrait
4. **Scale:** Define the scale that will be used to during the batch printing:
 - o **Scale to fit:** Scales small pages up and large pages down to fit the paper.
 - o **Scale:** Type the percentage to magnify or reduce the print.
5. Click **Finish**.



TIP: Different printers can be used with the same **Print profile**.

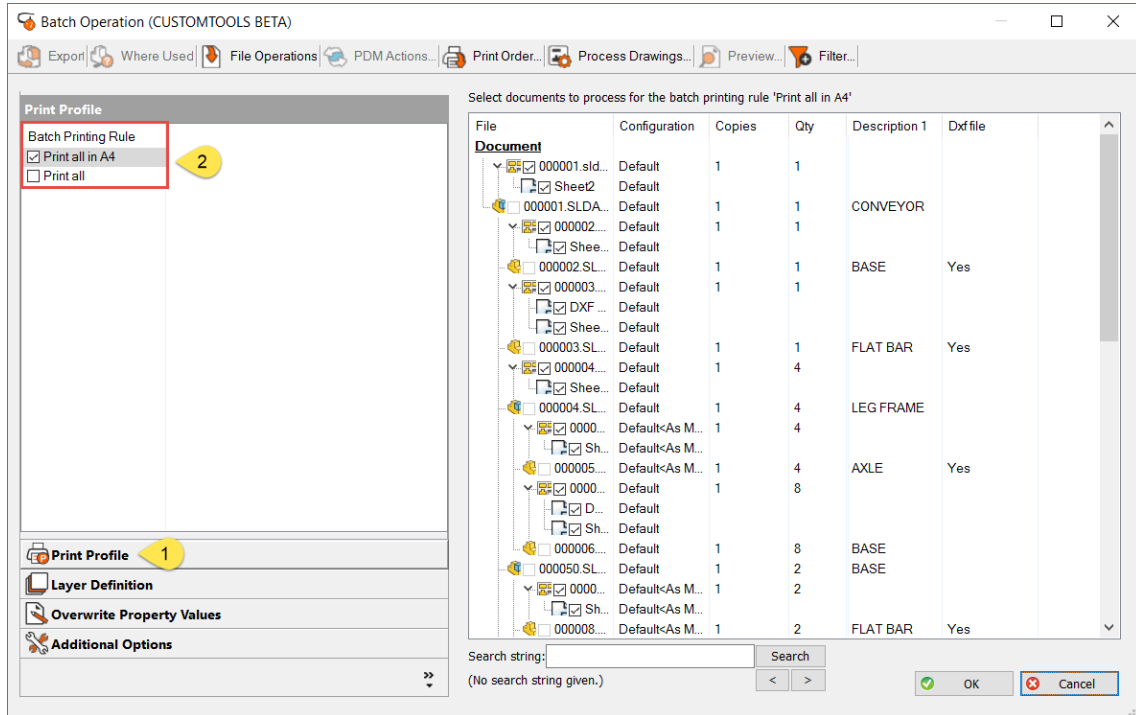


CUSTOMTOOLS

Printing your SOLIDWORKS Drawings

From an opened assembly in SOLIDWORKS

To batch print all the drawings related to an assembly. Open the top level assembly in SOLIDWORKS and click **Print & Convert** to open the **Batch operation** dialog.

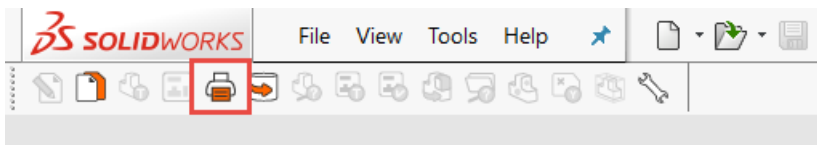


Open the **Print & Conversion** functionality:

1. The **Print Profile** button is active,
2. Select the **Print profiles** to be used from the **Batch Printing Rule**.

The sheets of the listed drawings will be automatically selected based on the **Sheet to print** settings defined for the selected print profile. Click **OK** to start the printing process.

If no documents are opened in SOLIDWORKS

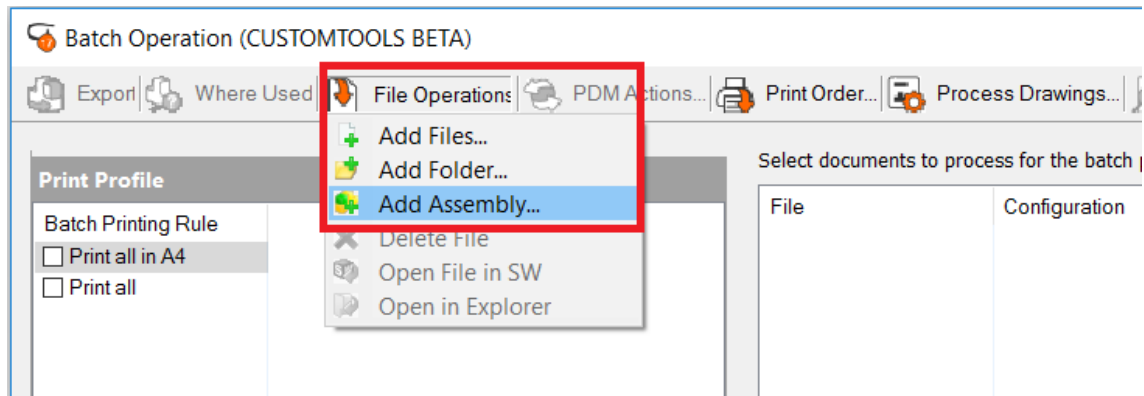


Opening the Batch operation dialog

The **Print & Convert** functionality can also be accessed if no documents are opened in SOLIDWORKS. Click on the **Print and Convert** icons from the **CommandManager** to open the batch operation dialog.

Adding the files to be printed

When the **Batch operation** dialog opens, the list of files to process is empty.



To add files to the list of files to process, click **File Operations**, then CUSTOMTOOLS offers three possibilities to select the files to be added to the list of files to print:

Add files: The files to be added are selected by the user from the Windows Explorer.

Add folder: The user selects the folder where the files to be added are located. If the **Include Subfolders** check box is selected, then files located in sub-folders will also be added.

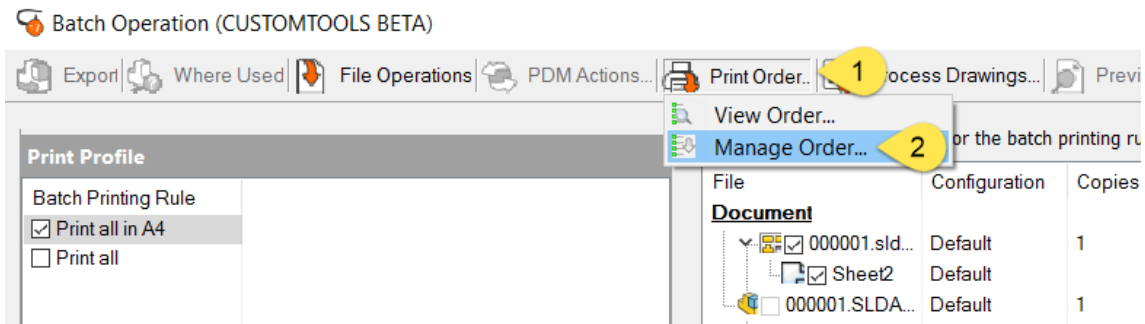
Add assembly: The user selects an assembly and all child components are automatically loaded.

Managing the printing order

The order in which documents are printed can be managed in CUSTOMTOOLS. By default, CUSTOMTOOLS prints the assembly's drawings and all referred documents in the Bill of Material (BOM) order.

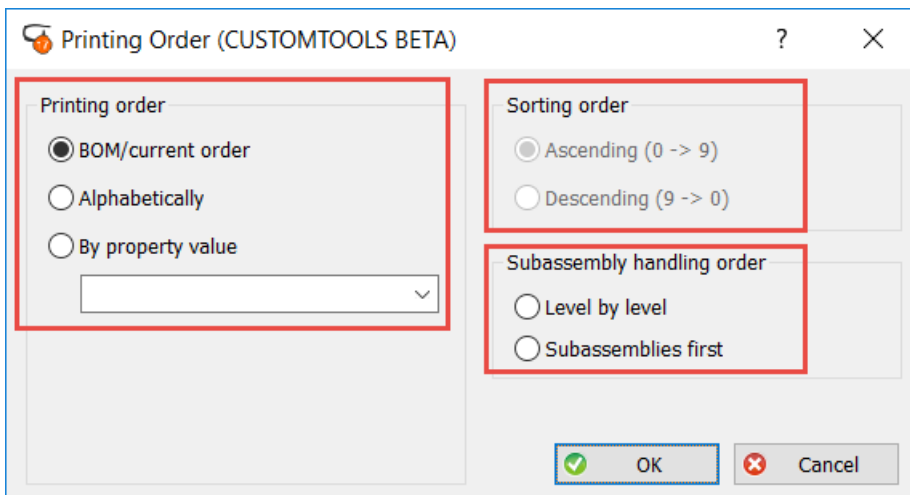


CUSTOMTOOLS



To manage the print order:

1. Click **Print order**, from the Batch Operation dialog,
2. Select **Manage Order**.



Printing order:

- **BOM/Current order:** Documents are processed in the BOM order.
- **Alphabetically:** Documents are processed alphabetically based on the filename.
- **By property value:** Select a property.

Sorting order: Arranged the printing order from largest to smallest OR smallest to largest.

Subassembly handling order: Defines how sub-assemblies are printed.

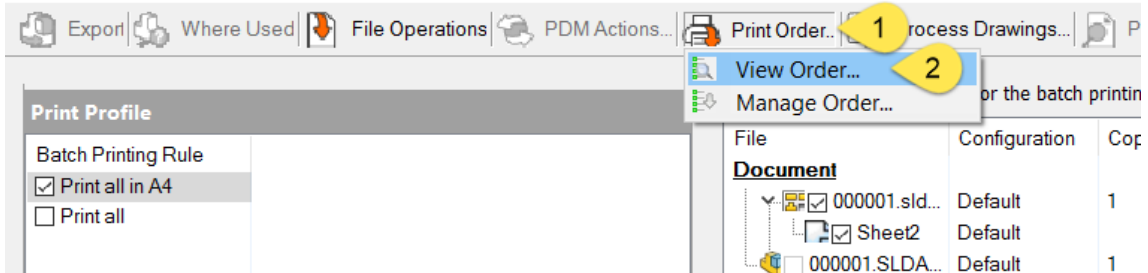


TIP: The printing order can be viewed before the documents are being processed.



CUSTOMTOOLS

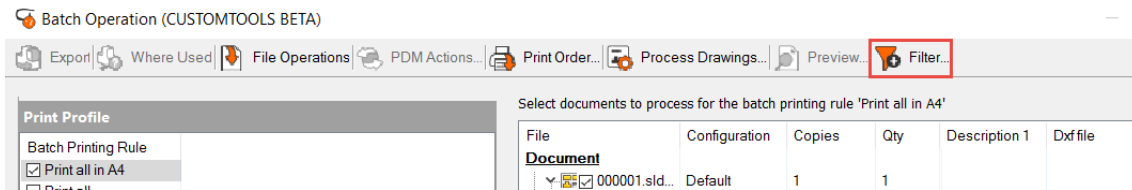
Batch Operation (CUSTOMTOOLS BETA)



. From the **Batch Operation** dialog:

1. Click **Print order**,
2. Select **View Order**.

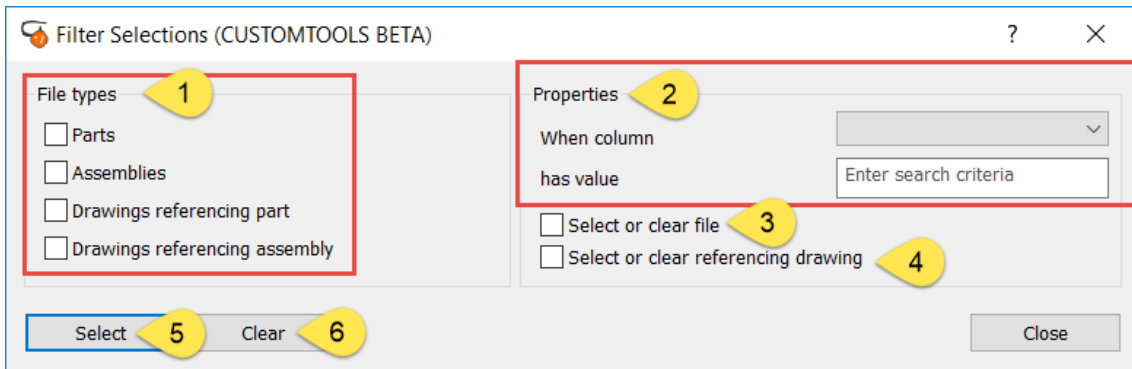
Filtering the documents to be selected for printing



To open the **Filter Selections** dialog, click **Filter** from the **Batch Operation** dialog.



NOTE: The filters are applied to the files selected by the selected **Print profile**.



1. **Files types:** The filter can be used to select or exclude certain file types from being selected, parts, assemblies, drawings made for part or assembly can be selected.



CUSTOMTOOLS



TIP: The filter can be used to print only the assemblies' drawings, if the **Drawing referencing assembly** check box is selected.

2. **Custom properties:** Documents to print can also be filtered based on a property value. From the **When Column** menu, select the property used to filter the selection and define the selection criteria from the **Has value** text box.



NOTE: Custom properties used has filter must have the option **Display in Print and convert** selected from the **Property wizard** on the **Additional Options** page.

3. **Select or clear:** If the Property is defined at the part or assembly level then parts or assemblies will be selected/cleared.
4. **Select or clear referencing drawing:** If the Property is defined at the part or assembly level then the drawings made for those parts or assemblies will be selected/cleared.
5. **Select:** Select the files that matches with the filter criteria defined in the **File type** or **Custom properties**.
6. **Clear:** Clear the files that matches with the filter criteria defined in the **File type** or **Custom properties**.

From other functionalities of CUSTOMTOOLS

The Print functionality of CUSTOMTOOLS can also be launched from:

- **Search results:**

Select an assembly from the search result and click **PrintAndConvert**. If an assembly has been selected, click **BOM of Selected File(s)...** to add the assembly and its child component to the list of document to print.

Item Name	Drawing No	Item No	Qty	Description
000001.SL...	000006	0	1	CONVEYOR ...
000002...	000002	1	1	BASE MAIN D...

- **Where used:**



CUSTOMTOOLS

